

Zurich Engineering Inspection Services Ireland Limited (ZEIS)

Why ZEIS?



Nationwide team

Our large team of engineering experts are strategically located across Ireland, enabling us to consistently fulfil our customers' statutory inspection requirements and deliver a prompt, efficient, professional advisory and inspection service.



Proven technical expertise

Engineering inspections are an essential part of ensuring the safety of our customers' plant and machinery. With over 90 years' engineering experience, our customers will rest assured that they have the best technical expertise available to suit their needs.



Secure customer portal and reporting

ZEIS's powerful customer portal allows our customers to view the status of their engineering inspection information including plant location, contact information and inspection certificates.



Global strength and cross-border capabilities

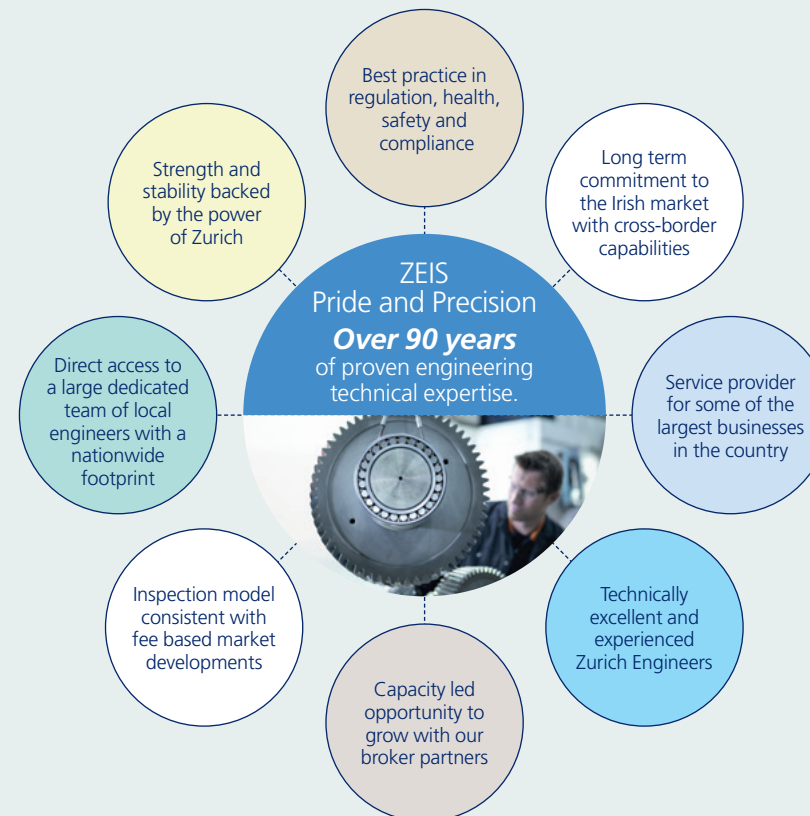
Backed by Zurich, one of Ireland's most trusted global insurers, with unrivalled financial strength and stability, demonstrated by their Standard and Poor's AA-rating*. As part of a global organisation, ZEIS can leverage the scale of Zurich's UK and Northern Ireland engineering operations through their cross-border capabilities.

*as at 30 November 2018

Pride and Precision

Making the most of an Engineer Surveyor's visit.

To get maximum benefit and minimise disruption to customers operations, prior to any visit, the following steps should be taken:



- Check the inspection schedule to ensure that all plant that requires inspection is included.
- Supply us with any information and documents that may be needed to complete a thorough examination of our customers plant and machinery.
- Ensure all equipment has been prepared in advance (for example by depressurising equipment where necessary) and that enough time is scheduled for out-of-service time for all inspections to be carried out.
- Make the appropriate staff and facilities available so that our Engineer Surveyor can easily perform inspections.
- Provide our Engineer Surveyor with safe access to the site and a safe working environment.

ZEIS is committed to best international standards and practices of health, safety and environmental matters. Through our impartial, in-service inspections, our team will help to ensure you are meeting the wide range of legislative responsibilities concerning the safety of your equipment.

Inspection services

Under current Irish legislation, accidents emanating from overdue inspections can potentially lead to serious legal action. When it comes to inspections, we can support you with potentially complex programmes, whilst ensuring statutory inspection requirements are met. It should be noted that a maintenance contract is not a substitute for statutory inspections.

Statutory requirements

Inspection of plant and maximum intervals at which each should be inspected:



Hoist or lifts: thorough examination every six months.



Vehicle lifting table: to be thoroughly examined every 12 months.



Cranes/lifting machines: thorough examination of all parts including anchorages every 12 months. Lifting machines may not be used for the first time unless tested, or if dismantled and re-erected. Except when used to lift people, then every six months.



Lifting tackle: Thorough examination every six months.

Our team of qualified engineers are strategically located throughout the country enabling a prompt, efficient and professional inspection service.



Steam boilers: Steam boilers together with fittings and attachments require thorough examination every 14 months or after extensive repairs. Also a further examination under normal steam pressure within three months of the thorough examination, new or second hand may not be used until certified.



Steam receivers: Thorough examination every 26 months. Second hand steam receivers must be certified or examined before being used for the first time.



Air receivers: Similar to steam receivers.

The above is a guide to the current statutory requirements. These requirements are subject to change in line with regulations and legislation.

Statutory Inspections are carried out under the below legislation
Safety, Health & Welfare at Work (general application) Regulations 2007 S.I. No. 299 of 2007 and the Safety, Health & Welfare at Work (general application) (Amendment) Regulations 2012 S.I. No. 445 of 2012.

Zurich Engineering Inspection Services Ireland Limited, PO Box 78, Wexford, Ireland.
Telephone 01 667 0666. www.zurich.ie.

Plant types

Pressure Plant includes:

STEAM BOILERS, INDUSTRIAL HOT WATER BOILERS, AIR RECEIVERS, JACKETED PANS, PRESSURE COOKERS, IRONING MACHINES, REFRIGERATED PLANT, AUTOCLAVES.

Lifting Plant includes:

FORK LIFT TRUCKS, LIFTS, ESCALATORS, CRANES, LOADING SHOVELS, EXCAVATORS, LIFTING TABLES, BLOCKS, BUILDERS HOISTS, WINCHES, SCISSORS PLATFORMS, CHERRY PICKERS, CHAINS, SLINGS, ROPES, LIFTING TACKLE.

The benefits of engineering inspections

Engineering inspection contracts not only help to ensure legal compliance, but can also add greater value to a business' operations including:

- Avoiding costly fines and possible imprisonment for non-compliance.
- Avoiding equipment downtime as equipment will be regularly checked and therefore reducing maintenance costs.
- Improving efficiency, longevity and environmental impact; helping machinery run more efficiently, last longer and use less energy.

Zurich engineering inspections are carried out independently and are separate to regular maintenance services.

Zurich engineering services provides a €10m limit of indemnity on all engineering inspection service contracts.



Additional inspection services

Inspection services are also available on the following equipment:

- Racking systems.
- Security gates.
- Roller shutter doors.
- Car park barriers.



For more information on Zurich's Engineering Inspection service, contact your Business Development Executive.



ZURICH®